

Sonate pour violon & basse continue

The image displays a musical score for a sonata for violin and continuo. The score is written in treble clef with a key signature of one sharp (F#) and a time signature of 3/4. The music is organized into eight staves, each containing a line of notation. Measure numbers 1, 11, 21, 31, 41, and 51 are indicated at the beginning of their respective staves. The notation includes various note values (quarter, eighth, and sixteenth notes), rests, and accidentals (sharps and naturals). The piece concludes with a double bar line and a common time signature 'C' at the end of the eighth staff.

Presto

61

71

81

91

101

111

Adagio

Musical score for the Adagio section, measures 118-121. The music is written in treble clef with a key signature of one flat (B-flat). Measure 118 begins with a half note G4, followed by quarter notes A4, B4, and C5. Measure 119 continues with quarter notes D5, E5, and F5. Measure 120 features a half note G5, quarter notes A5, and B5. Measure 121 starts with a half note C6, followed by a sixteenth-note triplet of D6, E6, and F6, and concludes with a sixteenth-note triplet of G6, A6, and B6.

Presto

Musical score for the Presto section, measures 122-161. The music is written in treble clef with a key signature of one flat (B-flat). Measure 122 begins with a quarter note G4, followed by quarter notes A4, B4, and C5. Measure 123 continues with quarter notes D5, E5, and F5. Measure 124 features a quarter note G5, quarter notes A5, and B5. Measure 125 starts with a quarter note C6, followed by a quarter note D6, and concludes with a quarter note E6. Measure 126 begins with a quarter note F6, followed by a quarter note G6, and concludes with a quarter note A6. Measure 127 continues with a quarter note B6, quarter notes C7, and D7. Measure 128 features a quarter note E7, quarter notes F7, and G7. Measure 129 starts with a quarter note A7, quarter notes B7, and C8. Measure 130 continues with a quarter note D8, quarter notes E8, and F8. Measure 131 begins with a quarter note G8, quarter notes A8, and B8. Measure 132 starts with a quarter note C9, quarter notes D9, and E9. Measure 133 continues with a quarter note F9, quarter notes G9, and A9. Measure 134 features a quarter note B9, quarter notes C10, and D10. Measure 135 starts with a quarter note E10, quarter notes F10, and G10. Measure 136 continues with a quarter note A10, quarter notes B10, and C11. Measure 137 begins with a quarter note D11, quarter notes E11, and F11. Measure 138 starts with a quarter note G11, quarter notes A11, and B11. Measure 139 continues with a quarter note C12, quarter notes D12, and E12. Measure 140 features a quarter note F12, quarter notes G12, and A12. Measure 141 begins with a quarter note B12, quarter notes C13, and D13. Measure 142 starts with a quarter note E13, quarter notes F13, and G13. Measure 143 continues with a quarter note A13, quarter notes B13, and C14. Measure 144 features a quarter note D14, quarter notes E14, and F14. Measure 145 starts with a quarter note G14, quarter notes A14, and B14. Measure 146 continues with a quarter note C15, quarter notes D15, and E15. Measure 147 begins with a quarter note F15, quarter notes G15, and A15. Measure 148 starts with a quarter note B15, quarter notes C16, and D16. Measure 149 continues with a quarter note E16, quarter notes F16, and G16. Measure 150 features a quarter note A16, quarter notes B16, and C17. Measure 151 starts with a quarter note D17, quarter notes E17, and F17. Measure 152 continues with a quarter note G17, quarter notes A17, and B17. Measure 153 begins with a quarter note C18, quarter notes D18, and E18. Measure 154 starts with a quarter note F18, quarter notes G18, and A18. Measure 155 continues with a quarter note B18, quarter notes C19, and D19. Measure 156 features a quarter note E19, quarter notes F19, and G19. Measure 157 starts with a quarter note A19, quarter notes B19, and C20. Measure 158 continues with a quarter note D20, quarter notes E20, and F20. Measure 159 begins with a quarter note G20, quarter notes A20, and B20. Measure 160 starts with a quarter note C21, quarter notes D21, and E21. Measure 161 concludes with a quarter note F21, quarter notes G21, and A21.



221

231

241

251

Aria

261

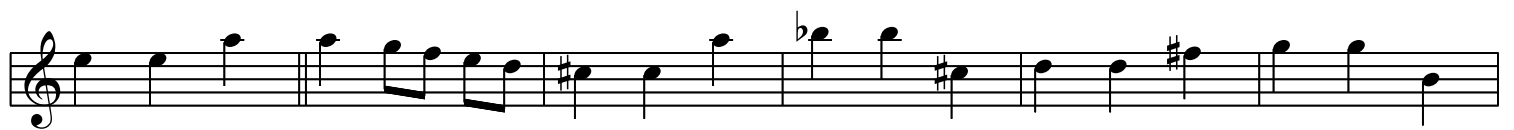
271

281

291

301

311





Presto



391



401



411



